

SILVER BELL ESTATES NO. 1

PART OF SEC. 32, T.7N., R.1E., S.L.B.&M.

IN WEBER COUNTY, UTAH
EDEN DISTRICT

TAXING UNIT 28

PREFIX 22-034

LOTS 22-27, 41-44

SCALE 1" = 100'

EDEN CEMETERY
MAINTENANCE DISTRICT

EXCEPT WHERE OTHERWISE SHOWN,
ALL LOTS ARE OWNED BY:
SILVER BELL CORPORATION

ALL ROADS IN THIS SUBDIVISION ARE OWNED BY
WEBER COUNTY
SEE 22-032-0028

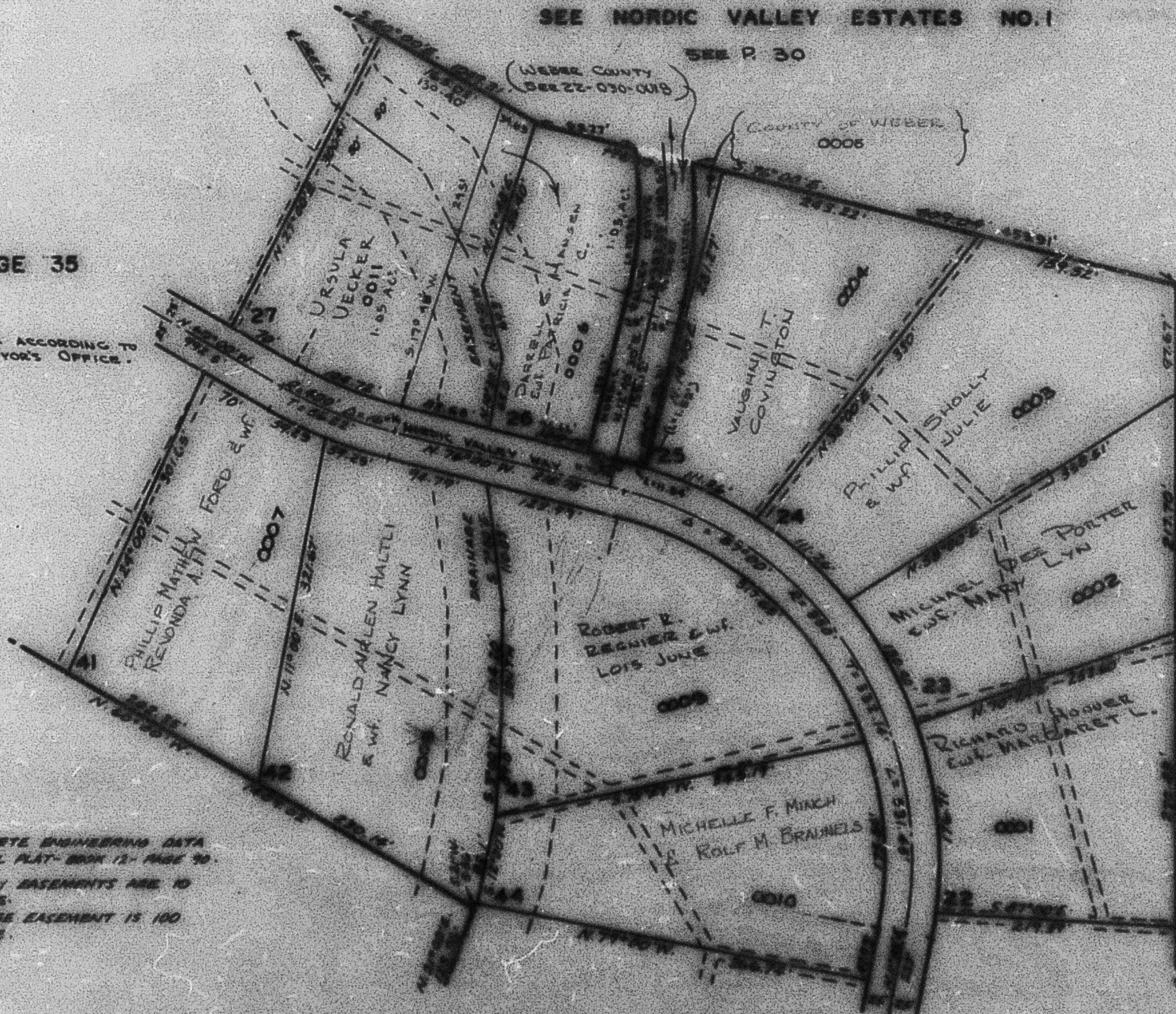
SEE NORDIC VALLEY ESTATES NO. 1

SEE P. 30

SEE PAGE 35

* NOTE: STREET NAME ACCORDING TO
COUNTY SURVEYOR'S OFFICE.

NOTE:
FOR COMPLETE ENGINEERING DATA
SEE ORIGINAL PLAT-BOOK 12- PAGE 30.
ALL UTILITY EASEMENTS ARE 10
FEET WIDE.
THE DRAINAGE EASEMENT IS 100
FEET WIDE.



SEE PAGE
41

SEE PAGE 33